

Who are we?



Three statutory partners:

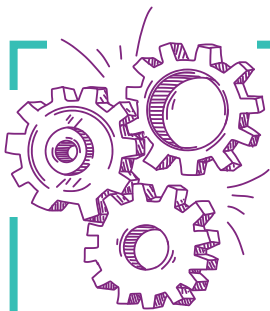
- Nottingham City Council Adult Social Care
- Nottinghamshire Police
- Greater Nottingham Clinical Commissioning Group

And eleven other partners:

1. Nottingham City Council Community Protection
2. Nottinghamshire Probation Service
3. Derbyshire, Leicestershire, Nottinghamshire & Rutland Community Rehabilitation Company
4. Nottinghamshire Fire and Rescue Service
5. East Midlands Ambulance Service
6. Nottinghamshire Healthcare NHS Foundation Trust
7. Nottingham CityCare Partnership
8. Nottingham University Hospitals NHS Trust
9. Nottingham Community & Voluntary Service
10. HMP Nottingham
11. Healthwatch

Independent Chair:

Malcolm Dillion chaired the Board throughout the year with Joy Hollister taking on this role from April 2019.



How we work?

There are three subgroups undertaking the work of the Board:

- 1. The Quality Assurance Subgroup:** responsible for collecting evidence concerning the quality of local safeguarding adults' interventions and the performance of agencies and their staff.
- 2. The Safeguarding Adults Review (SAR) Subgroup:** responsible for the referral and commissioning of any SARs to ensure that agencies learn lessons and improve.
- 3. The Training, Learning & Improvement Subgroup:** responsible for disseminating the learning identified in SARs, communicating safeguarding messages and training opportunities.

What have we achieved this year?



Preventative action taken:

- Promotion of how to report safeguarding concerns in the community and in care homes
- Promotion of how to prevent financial abuse

Assurance sought from partners:

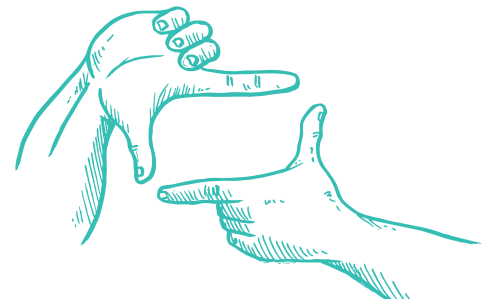
- Assurance that safeguarding partnership arrangements remain in place in care homes
- Assurance in respect of Learning Disability Mortality Review, Deprivation of Liberty Safeguards, Adult Social Care Reviews, Advocacy provision, local homelessness strategy & the Independent Inquiry into Child Sexual Abuse

Action to Make Safeguarding Personal:

- Contributed towards the monitoring activities of East Midlands Safeguarding Adults Network
- Jointly commissioned a HealthWatch survey on public understanding of safeguarding

Improvements to Board Performance:

- Jointly reviewed SAR and Safeguarding procedures, as well as launched the Performance Assurance Tool
- Refreshed membership of Board subgroups & appointed a new Independent Chair



What is our focus for 2019/20

- Working with Voluntary sector partners
- Supporting young adults transitioning from care
- Reviewing local approaches to homelessness
- Reviewing recruitment & induction processes
- Seeking assurance on safeguarding within the Integrated Care System
- Seeking assurance on the partnership response to the challenges of austerity

What external assurance have we sought?

- Housing & homelessness
- Prevent
- Modern Slavery
- Female Genital Mutilation
- Domestic Sexual Violence & Abuse
- Suicide Prevention



What Safeguarding Adult Reviews have been conducted?

Two SARs are currently ongoing, whilst a third SARs referral did not satisfy the criteria.



“The key message from the data and partner returns is one of increasing demand and complexity within the adult safeguarding arena. I am heartened by the continued focus and commitment across the partnership. Despite these challenges, we continue to benefit from senior colleagues’ focus on the key safeguarding issues facing us all. Looking forward, the Board will continue to address its core priorities, including learning through Safeguarding Adults Reviews, focussing on prevention and communication and, most importantly, by listening and reflecting upon citizens’ safeguarding experiences. We will continue to look for key assurance that safeguarding is embedded across all organisations and that ‘Making Safeguarding Personal’ continues to be a golden thread throughout the partnership’s work.”

Joy Hollister, Independent Chair



The graph below shows in 2018-19 there were 3204 referrals - a 13.7% increase to the year before.

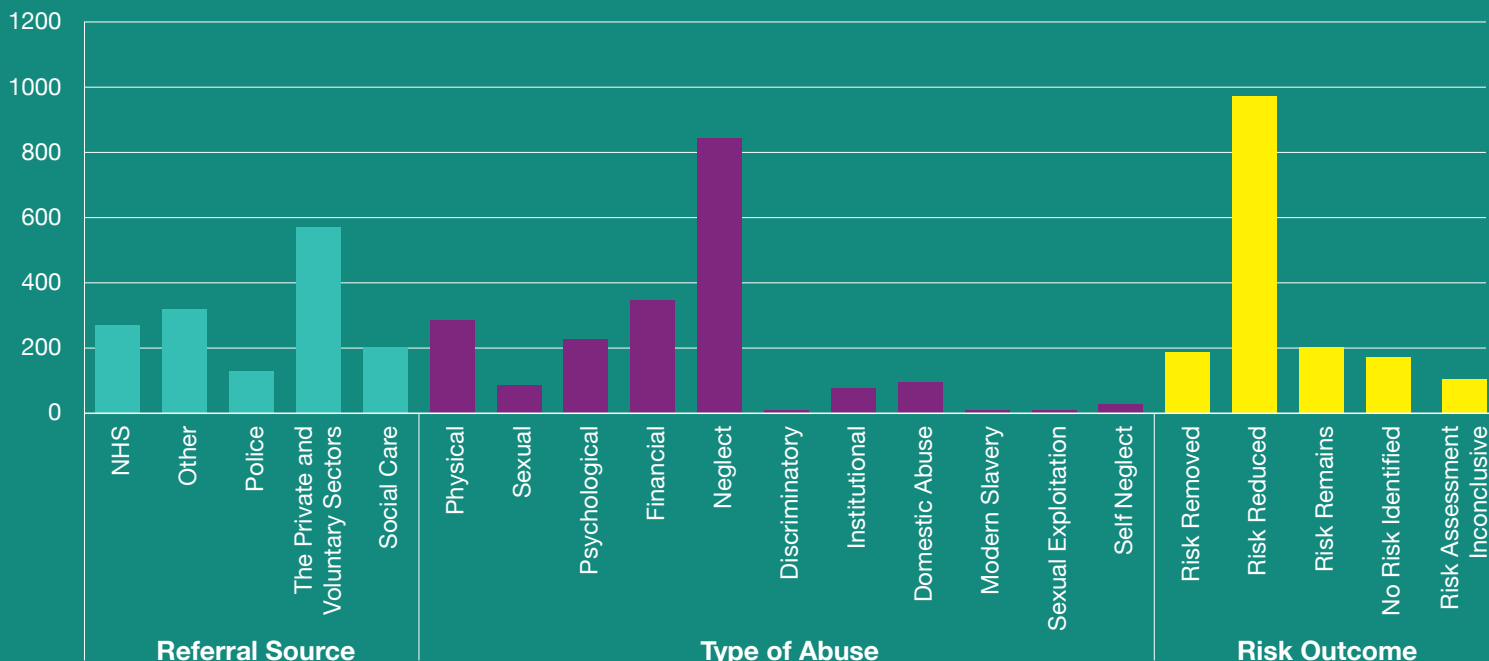
Of the total referrals 1584 (49.4%) progressed to a s42 enquiry - compared to 1731 the year before. Whilst this first figure may reflect greater safeguarding awareness amongst referrers, the latter figure demonstrates continued adherence to Care Act eligibility by the Council’s Safeguarding team.

As in previous years, the volume of safeguarding referrals mostly comes from the private and voluntary sectors and neglect, physical and psychological abuse are the most

common concerns. In 61% of referrals the concerns are resolved by a reduction in risk, in 11% the risk is removed and in 12% the risk remains. This represents a slight improvement on last year where the respective figures were 58% risk reduced, 15% risk removed and 11% risk remains.

3,204 Safeguarding Referrals
1,584 Progressed to Section 42 Enquiry (49.4%)

2018/29 Key Safeguarding Data



*Referral Source, Type of Abuse and Risk Outcomes related to Section 42 Enquiries Only.